

# STEP TEMPEST

HERBIE NICHOLS

## BASS

TRANSCRIBED &

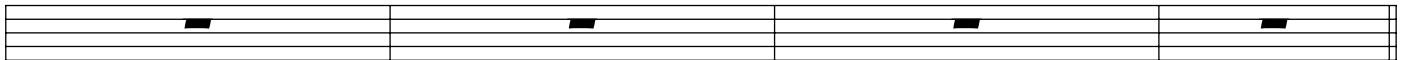
ARRANGED BY

ERIC T. JOHNSON

### INTRO/OUTRO



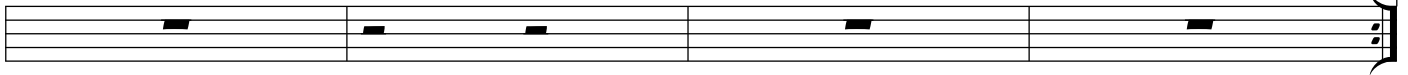
(DRUMS)



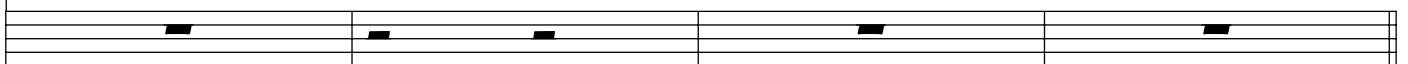
**A** Eb<sup>o</sup>7/A<sup>b</sup> E<sup>o</sup>7/A<sup>b</sup> F<sup>o</sup>7/A<sup>b</sup> G<sup>b</sup>o7/A<sup>b</sup>



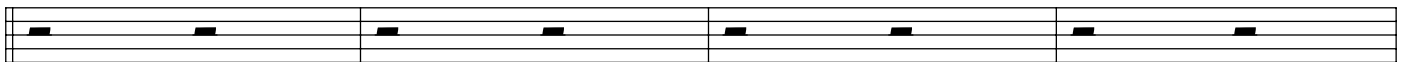
<sup>1</sup> D<sup>b</sup>7 B<sup>b</sup>7 E<sup>b</sup>7 E7



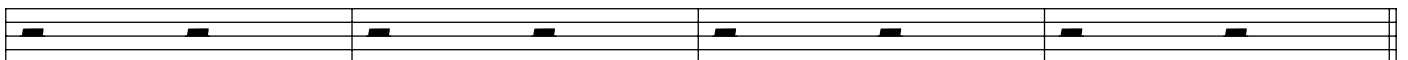
<sup>2.</sup> D<sup>b</sup>7 B<sup>b</sup>7 E<sup>b</sup>7 Ab<sup>7</sup>/E<sup>b</sup> D<sup>b</sup>



**B** F/C Ab<sup>7</sup> G<sup>7</sup> G<sup>b</sup>7 F7 E7 E<sup>b</sup>7 A7



Ab<sup>7</sup> B7 B<sup>b</sup>7 A7 A<sup>b</sup> B<sup>b</sup>7 E7



C
E<sup>b</sup>°7/A<sup>b</sup>
E°7/A<sup>b</sup>
F°7/A<sup>b</sup>
G<sup>b</sup>°7/A<sup>b</sup>

28  
 Eb7                      Bb7                      Eb7                      Ab7/Eb      Db

32  
 Gbm(MA57)                      Eaug                      D7(#11) Db                      (DRUMS)

36

**PLAY INTRO TO ENO!!!**